

www.masonleds.com



Stock Code : 002654

Guangdong Mason Technologies Co., Ltd.

Address: No.1, West Industrial 1st Road, Songshan Lake,
Dongguan 523808, China
Tel: +86-769-89950999
Fax: +86-769-89950329
E-mail: market@masonled.com

Statement : All of the product's parameters in this book are just for your reference, Mason have the right to revise or cancel the related parameters at anytime without advance notice. If you have questions, please contact our customer service hotline.



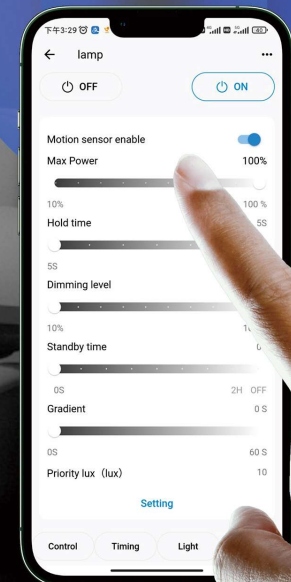
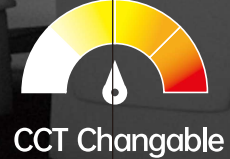
LED TRI-PROOF LIGHT

INDUSTRIAL & COMMERCIAL APPLICATIONS

www.masonleds.com

CONTROLS AND ENERGY SAVING SOLUTIONS

- ◉ Motion sensor
- ◉ Wireless control
- ◉ Dimmable
- ◉ CCT changable



ESTE SERIES

LED TRI-PROOF LIGHT

20W-45W

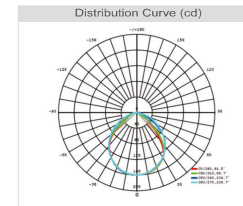


TECHNICAL PARAMETER

Model No.	System Power	Luminous Efficiency	Weight(kg)
MS-LL0080620-XXBF	20W	130-150lm/W	1.2
MS-LL0081235-XXBF	35W	130-150lm/W	1.88
MS-LL0081545-XXBF	45W	130-150lm/W	2.2

IP65	IK08	10-85%RH	50-60Hz	CCT 3000K-6500K
PF >0.9	CRI 80	-20°C 45°C	>50000H	220-240V

LIGHT DISTRIBUTION CURVE



FEATURES

- + Simple and stylish design.
- + PC cover + aluminum housing with modular connections.
- + High-efficiency LED light source.
- + IP65/IK08 protection with uniform light output.
- + Easy installation for various applications.
- + Optional microwave sensor, Bluetooth, DALI/0-10V control.
- + Emergency lighting and smart function modules.

APPLICATION

Suitable for Gallery, factories, schools, supermarket, office buildings etc. different application lighting.

PRODUCT SIZES

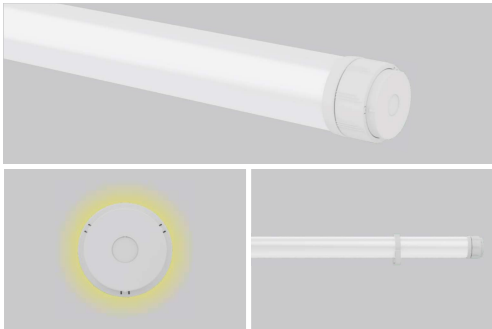
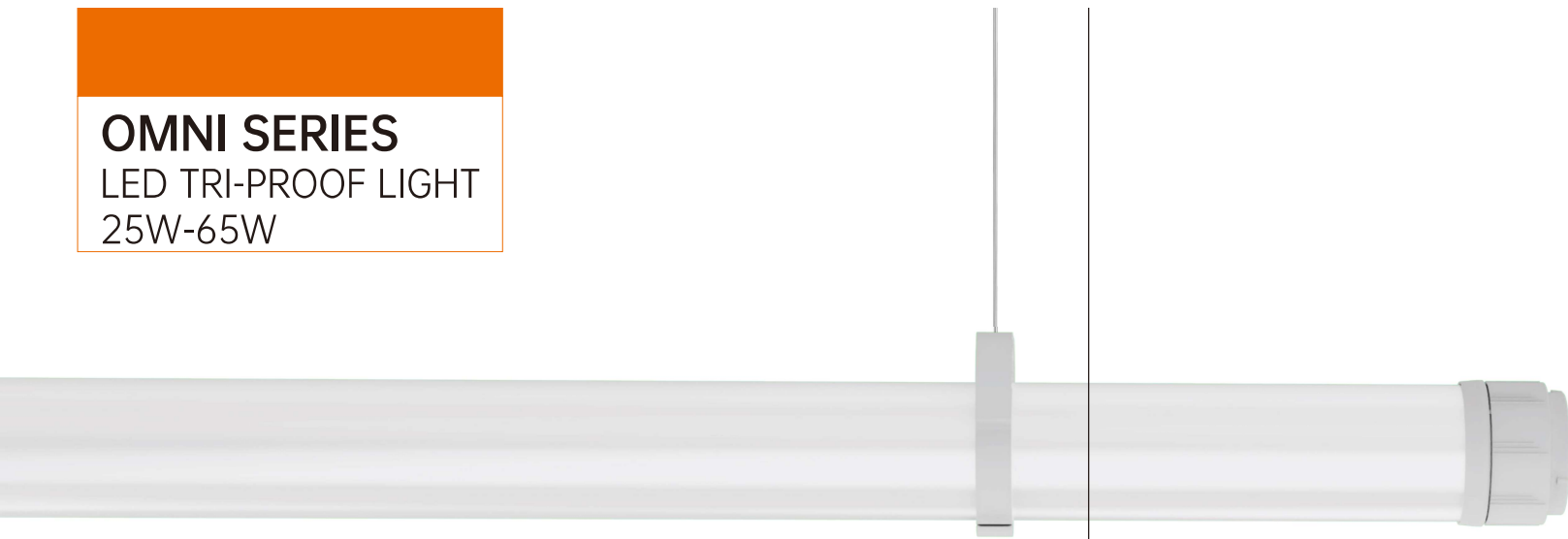


System Power	Product Size(L*Φ)mm
20W	600*70
35W	1200*70
45W	1500*70

OMNI SERIES

LED TRI-PROOF LIGHT

25W-65W

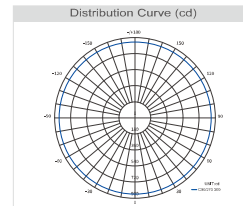


TECHNICAL PARAMETER

Model No.	System Power	Luminous Efficiency	Weight(kg)
MS-LL0020625-XXBF	25W	130-150lm/W	0.7
MS-LL0021250-XXBF	50W	130-150lm/W	1.28
MS-LL0021565-XXBF	65W	130-150lm/W	1.6

IP65	IK08	10-85%RH	50-60Hz	CCT 3000K-6500K
PF >0.9	CRI 80	-20°C 45°C	>50000H	220-240V

LIGHT DISTRIBUTION CURVE



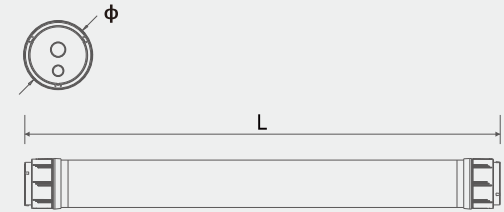
FEATURES

- ★ Tool-free assembly design.
- ★ IP65 waterproof protection.
- ★ IK08 impact resistance.
- ★ 3x1.5mm² pass-through wiring for series connection.
- ★ Bluetooth and motion sensor options.
- ★ High efficiency: 130-150 lm/W.
- ★ 360° beam angle.

APPLICATION

Widely used in all types of production line, parking lot, factory, shopping mall, and supermarket. It can replace traditional tri-proof lamp.

PRODUCT SIZES

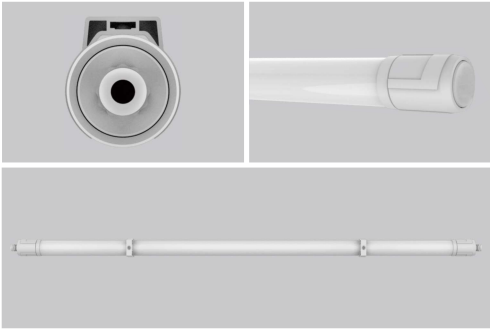


System Power	Product Size(L*φ)mm
25W	700*75
50W	1300*75
65W	1600*75

SOCRATES SERIES

LED TRI-PROOF LIGHT

12W-45W

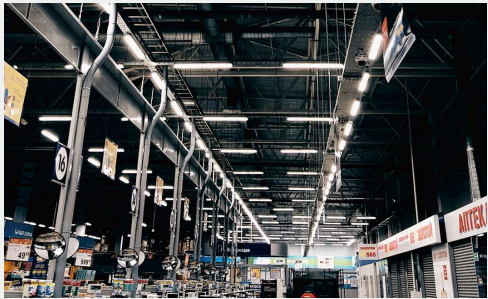
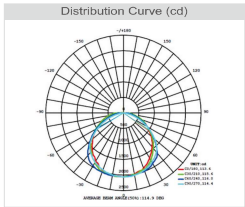


TECHNICAL PARAMETER

Model No.	System Power	Luminous Efficiency
MS-LL06012-XXBF	12W	150-160lm/W
MS-LL15045-XXBF	45W	150-160lm/W

IP65	IK08	PF >0.9	50-60Hz	CCT 4000K-6500K
10-85%RH	CRI 80	-20°C 45°C	>50000H	220-240V

LIGHT DISTRIBUTION CURVE



FEATURES

- + High-quality SMD LEDs for stable color and lumen maintenance.
- + Custom driver with reliable components for enhanced stability.
- + Proprietary secondary optics for higher efficiency and uniform light.
- + Advanced aluminum extrusion for optimal heat dissipation.
- + Industrial, minimalist design with detachable wiring for easy installation.
- + Full polycarbonate construction.

APPLICATION

Car washing yard, Parking lot, Meat processing, Farm, Food processing yard, Low temperature storage room, Department store.

PRODUCT SIZES

System Power	Product Size(L*Φ)mm
12W	600*53
45W	1500*53

PATRON SERIES

LED TRI-PROOF LIGHT

12W-80W



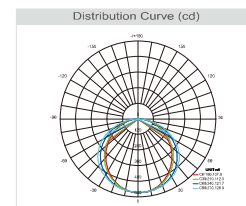
TECHNICAL PARAMETER

Model No.	System Power	Luminous Efficiency	Weight(kg)
MS-LL0030612-XXBF	12W	140-160lm/W	0.5
MS-LL0031224-XXBF	24W	140-160lm/W	0.86
MS-LL0031532-XXBF	32W	140-160lm/W	1
MS-LL0030620-XXBF	20W	140-160lm/W	1
MS-LL0031235-XXBF	35W	140-160lm/W	1.6
MS-LL0031545-XXBF	45W	140-160lm/W	1.85
MS-LL0030624-XXBF	24W	140-160lm/W	1.5
MS-LL0031250-XXBF	50W	140-160lm/W	2.7
MS-LL0031580-XXBF	80W	140-160lm/W	3.3

IP66
 IK08
 PF >0.9
 47-63Hz
 CCT 3000K-6500K

20-95%RH
 CRI 80
 -20°C 45°C
 >50000H
 220-240V

LIGHT DISTRIBUTION CURVE



www.masonleds.com



FEATURES

- + IP66 waterproof protection.
- + The entire luminaire can achieve IP69K protection rating.
- + IK08-10 impact resistance.
- + UV resistant.
- + Ammonia resistant.
- + Corrosion resistant.

APPLICATION

Car washing yard, Parking lot, Meat processing, Farm, Food processing yard, Low temperature storage room, Department store.

PRODUCT SIZES

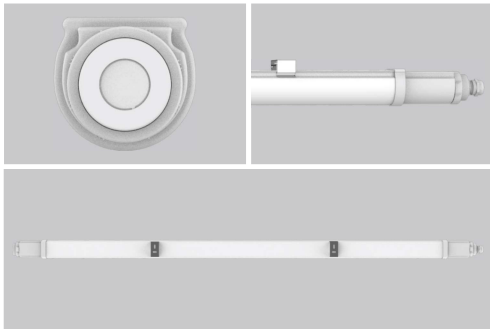


System Power	Product Size(L*Φ)mm
12W	600*48
24W	1200*48
32W	1500*48
20W	600*70
35W	1200*70
45W	1500*70
24W	600*100
50W	1200*100
80W	1500*100

HALLEY SERIES

LED TRI-PROOF LIGHT

20W-50W

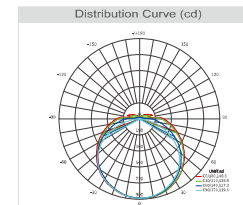


TECHNICAL PARAMETER

Model No.	System Power	Luminous Efficiency	Weight(kg)
MS-LL0010620-XXBF	20W	130-150lm/W	0.4
MS-LL0011235-XXBF	35W	130-150lm/W	0.65
MS-LL0011550-XXBF	50W	130-150lm/W	0.8

IP65	IK08	10-85%RH	50-60Hz	CCT 3000K-6500K
PF >0.9	CRI 80	-20°C 45°C	>50000H	220-240V

LIGHT DISTRIBUTION CURVE



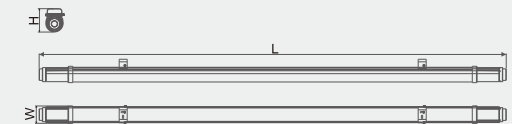
FEATURES

- ★ Tool-free assembly design.
- ★ IP65 waterproof protection.
- ★ IK08 impact resistance.
- ★ 3×1.0mm² pass-through wiring for series connection.
- ★ Bluetooth and motion sensor options.
- ★ High efficiency: 150 lm/W.

APPLICATION

Widely used in all types of production line, parking lot, factory, shopping mall, and supermarket. It can replace traditional tri-proof lamp.

PRODUCT SIZES

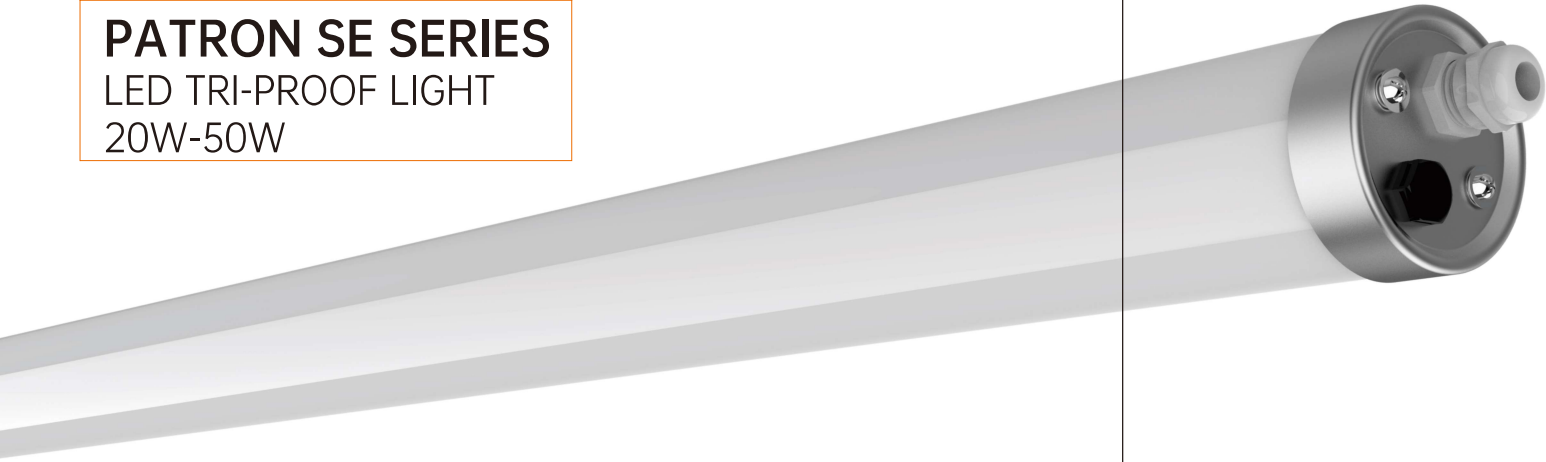


System Power	Product Size(L*W*H)mm
20W	600*56*52
35W	1200*56*52
50W	1500*56*52

PATRON SE SERIES

LED TRI-PROOF LIGHT

20W-50W

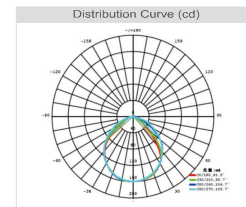


TECHNICAL PARAMETER

Model No.	System Power	Luminous Efficiency	Weight(kg)
MS-LL00706020-40BF	20W	150-160lm/W	0.56
MS-LL00712040-40BF	40W	150-160lm/W	1
MS-LL00715050-40BF	50W	150-160lm/W	1.92

IP66	IK10	PF >0.9	47-63Hz	CCT 3000K-6500K
20-95%RH	CRI 80	-20°C 45°C	>50000H	220-240V

LIGHT DISTRIBUTION CURVE



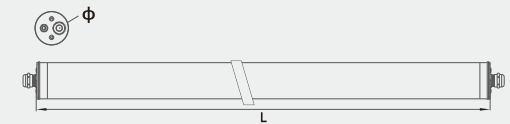
FEATURES

- + IP66 waterproof protection.
- + The entire luminaire can achieve IP69K protection rating.
- + IK10 impact resistance.
- + UV resistant.
- + Ammonia resistant.
- + Corrosion resistant.
- + High efficiency: 150-160 lm/W.

APPLICATION

Food processing plant, Chemical Facilities, Animal Stable (ammonia-resistance) Warehouse, Factory, Car washing place etc special application.

PRODUCT SIZES

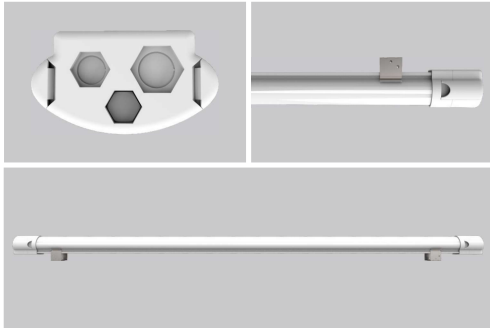


System Power	Product Size(L*Φ)mm
20W	600*70
40W	1200*70
50W	1500*70

PLATO SERIES

LED TRI-PROOF LIGHT

25W-65W

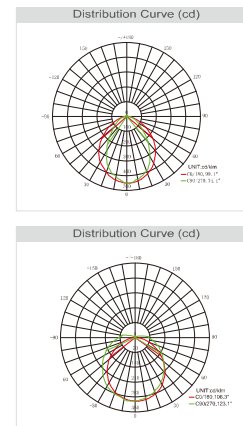


TECHNICAL PARAMETER

Model No.	System Power	Luminous Efficiency	Structure Description	Weight(kg)
MS-LL030825-50BF	25W	140-160lm/W	PC cover+ extruded aluminium	1.7
MS-LL030825-40BF	25W	140-160lm/W	PC cover+ extruded aluminium	1.7
MS-LL031546-50BF	46W~65W	140-160lm/W	PC cover+ extruded aluminium	2.4
MS-LL031546-40BF	46W~65W	140-160lm/W	PC cover+ extruded aluminium	2.4

IP65	IK08	PF >0.9	50-60Hz	CCT 3000K-6500K
10-85%RH	CRI 80	-20°C 45°C	>50000H	220-240V

LIGHT DISTRIBUTION CURVE



FEATURES

- + IP65 waterproof, and IK08 impact-resistant.
- + One-piece aluminum structure with built-in PC tube for shock resistance and soft light.
- + High-quality waterproof sealing gasket.
- + Standard luminous efficacy: 140-160 lm/W.
- + High-transmittance PC cover ensures uniform illumination without dark areas.
- + Dual-side clip design for easy assembly and installation.

APPLICATION

Wildly used in all types of production line, food plant, cool house, parking lot, factory, freight yard, shopping mall, and supermarket. It can replace traditional tri-proof lamp.

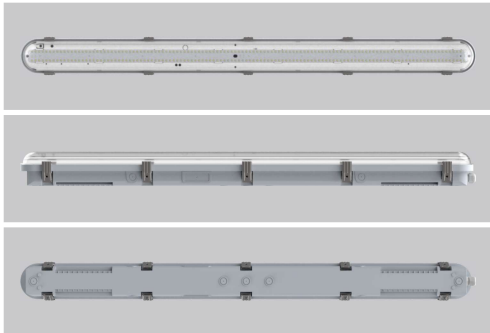
PRODUCT SIZES

System Power	Product Size(L*W*H)mm
25W	800*104*57
46W~65W	1500*104*57

APEX SERIES

LED TRI-PROOF LIGHT

20W-50W

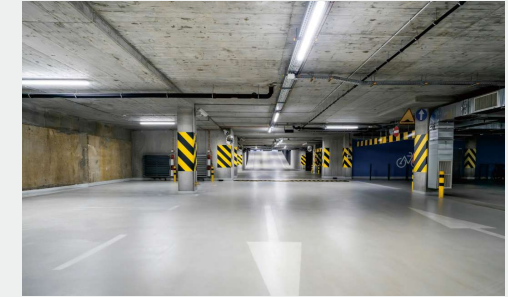
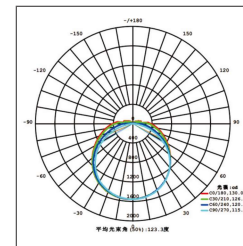


TECHNICAL PARAMETER

Model No.	System Power	Luminous Efficiency	Structure Description	Weight(kg)
MS-LL0620TB	20W	150lm/W	PC cover / PC base	1.2
MS-LL1240TB	40W	150lm/W	PC cover / PC base	2.0
MS-LL1550TB	50W	150lm/W	PC cover / PC base	2.15

IP65	IK08	PF >0.9	50Hz	CCT 2700K-6500K
10-85%RH	CRI 80/90 98	-20°C 40°C	>50000H	220-240V

LIGHT DISTRIBUTION CURVE



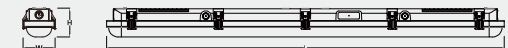
FEATURES

- ✦ Provides a visual reference for accurate hole placement of stainless steel mounting clips.
- ✦ An integrated captive nut ensures it remains fixed when tightening the cable gland from outside.
- ✦ The smooth fixture surface is entirely free of external latches or protrusions.
- ✦ Standard luminous efficacy: 150 lm/W.
- ✦ IP65 & IK08 suitable to be installed in wet and dusty environments.
- ✦ Optional Emergency Function.

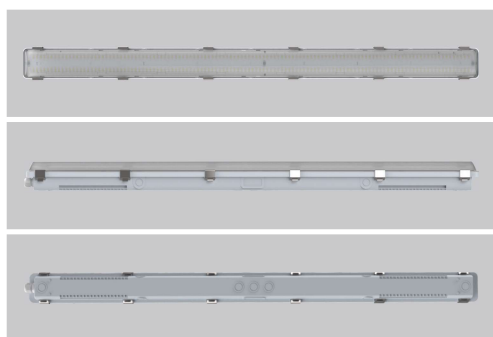
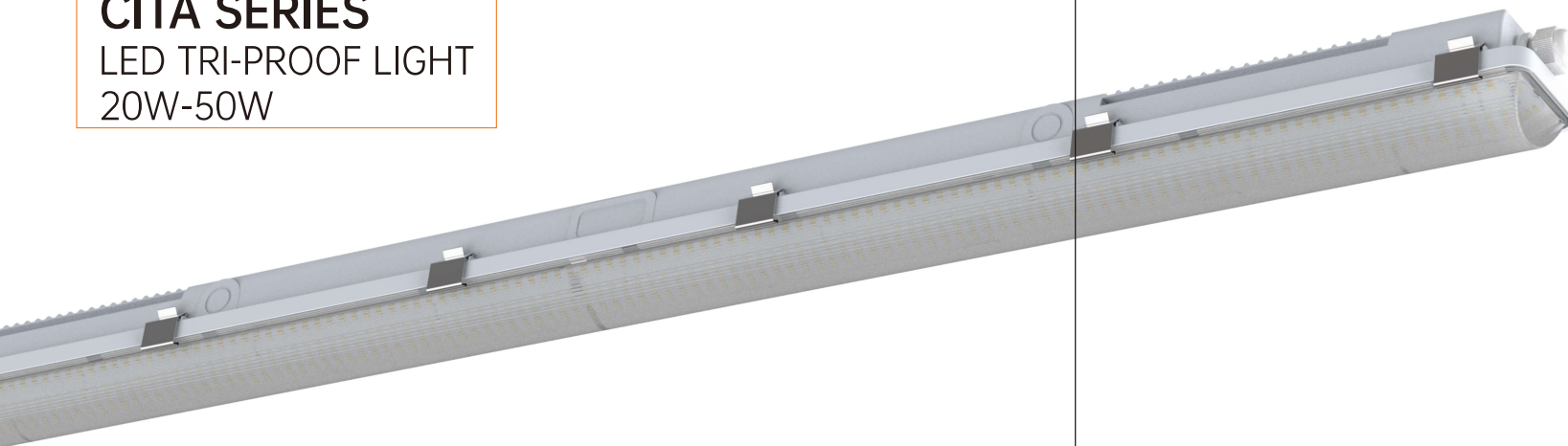
APPLICATION

Wildly used in all types of production line, food plant, cool house, parking lot, factory, freight yard, shopping mall, and supermarket. It can replace traditional tri-proof lamp.

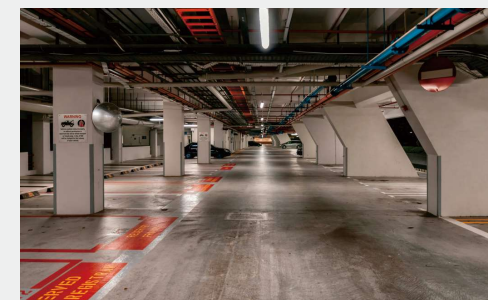
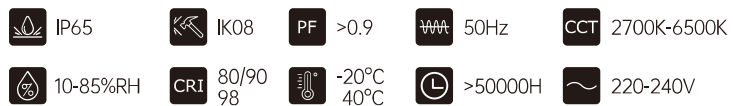
PRODUCT SIZES



System Power	Product Size(L*W*H)mm
20W	600x95x80
40W	1200x95x80
50W	1500x95x80



Model No.	System Power	Luminous Efficiency	Structure Description	Weight(kg)
MS-LL0620PA	20W	150lm/W	PC cover / PC base	1.05
MS-LL1240PA	40W	150lm/W	PC cover / PC base	1.8
MS-LL1550PA	50W	150lm/W	PC cover / PC base	2.09



- + Provides a visual reference for accurate hole placement of stainless steel mounting clips.
- + An integrated captive nut ensures it remains fixed when tightening the cable gland from outside.
- + The smooth fixture surface is entirely free of external latches or protrusions.
- + Standard luminous efficacy: 150 lm/W.
- + IP65 & IK08 suitable to be installed in wet and dusty environments.
- + Optional Emergency Function.

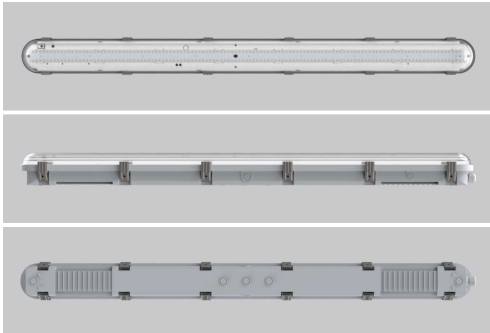
Wildly used in all types of production line, food plant, cool house, parking lot, factory, freight yard, shopping mall, and supermarket. It can replace traditional tri-proof lamp.

System Power	Product Size(L*W*H)mm
20W	600x82x74
40W	1200x82x74
50W	1500x82x74

FORTIS SERIES

LED TRI-PROOF LIGHT

20W-90W

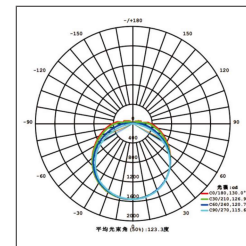


TECHNICAL PARAMETER

Model No.	System Power	Luminous Efficiency	Structure Description	Weight(kg)
MS-LL0620S	20W	150lm/W	PC cover / PC base	1.2
MS-LL1240S	40W	150lm/W	PC cover / PC base	2.0
MS-LL1550S	50W	150lm/W	PC cover / PC base	2.15
MS-LL2490S	90W	150lm/W	PC cover / PC base	3.4

IP66	IK08	PF >0.9	50Hz	CCT 2700K-6500K
10-85%RH	CRI 80/90 98	-20°C 40°C	>50000H	220-240V

LIGHT DISTRIBUTION CURVE



FEATURES

- ✦ Provides a visual reference for accurate hole placement of stainless steel mounting clips.
- ✦ An integrated captive nut ensures it remains fixed when tightening the cable gland from outside.
- ✦ The smooth fixture surface is entirely free of external latches or protrusions.
- ✦ Standard luminous efficacy: 150 lm/W.
- ✦ IP66 & IK08 suitable to be installed in wet and dusty environments.
- ✦ Optional Emergency Function.

APPLICATION

Wildly used in all types of production line, food plant, cool house, parking lot, factory, freight yard, shopping mall, and supermarket. It can replace traditional tri-proof lamp.

PRODUCT SIZES

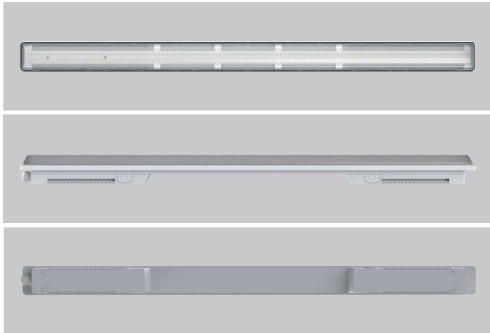


System Power	Product Size(L*W*H)mm
20W	600x95x83
40W	1200x95x83
50W	1500x95x83
90W	2400x95x84

SHIELD SERIES

LED TRI-PROOF LIGHT

20W-50W

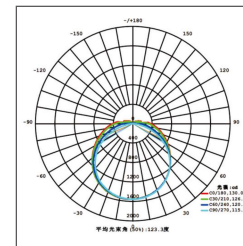


TECHNICAL PARAMETER

Model No.	System Power	Luminous Efficiency	Structure Description	Weight(kg)
MS-LL0620QB	20W	150lm/W	PC cover / PC base	1
MS-LL1240QB	40W	150lm/W	PC cover / PC base	1.7
MS-LL1550QB	50W	150lm/W	PC cover / PC base	1.9

IP65	IK08	PF >0.9	50Hz	CCT 2700K-6500K
10-85%RH	CRI 80/90 98	-20°C 40°C	>50000H	220-240V

LIGHT DISTRIBUTION CURVE



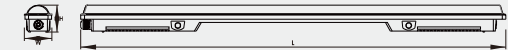
FEATURES

- ✦ Provides a visual reference for accurate hole placement of stainless steel mounting clips.
- ✦ An integrated captive nut ensures it remains fixed when tightening the cable gland from outside.
- ✦ The smooth fixture surface is entirely free of external latches or protrusions.
- ✦ Standard luminous efficacy: 150 lm/W.
- ✦ IP65 & IK08 suitable to be installed in wet and dusty environments.
- ✦ Optional Emergency Function.

APPLICATION

Wildly used in all types of production line, food plant, cool house, parking lot, factory, freight yard, shopping mall, and supermarket. It can replace traditional tri-proof lamp.

PRODUCT SIZES



System Power	Product Size(L*W*H)mm
20W	600x77x74
40W	1200x77x74
50W	1500x77x74

ZENO SERIES

LED TRI-PROOF LIGHT

20W-50W

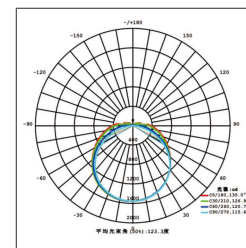


TECHNICAL PARAMETER

Model No.	System Power	Luminous Efficiency	Structure Description	Weight(kg)
MS-LL0620QA	20W	150lm/W	PC cover / PC base	1
MS-LL1240QA	40W	150lm/W	PC cover / PC base	1.7
MS-LL1550QA	50W	150lm/W	PC cover / PC base	1.9

IP65	IK08	PF >0.9	50Hz	CCT 2700K-6500K
10-85%RH	CRI 80/90 98	-20°C 40°C	>50000H	220-240V

LIGHT DISTRIBUTION CURVE



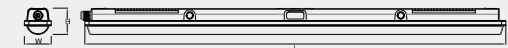
FEATURES

- ✦ Provides a visual reference for accurate hole placement of stainless steel mounting clips.
- ✦ An integrated captive nut ensures it remains fixed when tightening the cable gland from outside.
- ✦ The smooth fixture surface is entirely free of external latches or protrusions.
- ✦ Standard luminous efficacy: 150 lm/W.
- ✦ IP65 & IK08 suitable to be installed in wet and dusty environments.
- ✦ Optional Emergency Function.

APPLICATION

Wildly used in all types of production line, food plant, cool house, parking lot, factory, freight yard, shopping mall, and supermarket. It can replace traditional tri-proof lamp.

PRODUCT SIZES

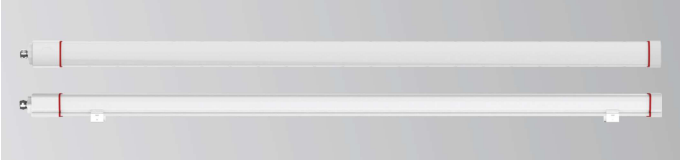


System Power	Product Size(L*W*H)mm
20W	600x82x74
40W	1200x82x74
50W	1500x82x74

MERCURY SERIES

LED TRI-PROOF LIGHT

20W-50W

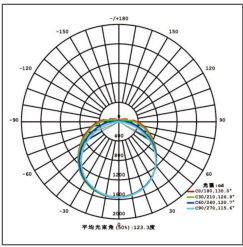


TECHNICAL PARAMETER

Model No.	System Power	Luminous Efficiency	Structure Description	Weight(kg)
MS-LL0620T102	20W	150lm/W	PC cover / PC base	0.5
MS-LL1235T102	35W	150lm/W	PC cover / PC base	0.73
MS-LL1550T102	50W	150lm/W	PC cover / PC base	0.86

- IP65
- IK08
- PF >0.9
- 50Hz
- CCT 2700K-6500K
- 10-85%RH
- CRI 80/90
- 20°C 45°C
- >50000H
- 220-240V

LIGHT DISTRIBUTION CURVE



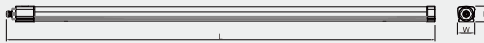
FEATURES

- Provides a visual reference for accurate hole placement of stainless steel mounting clips.
- An integrated captive nut ensures it remains fixed when tightening the cable gland from outside.
- The smooth fixture surface is entirely free of external latches or protrusions.
- Standard luminous efficacy: 150 lm/W.
- IP65 & IK08 suitable to be installed in wet and dusty environments.
- Optional Emergency Function.

APPLICATION

Wildly used in all types of production line, food plant, cool house, parking lot, factory, freight yard, shopping mall, and supermarket. It can replace traditional tri-proof lamp.

PRODUCT SIZES

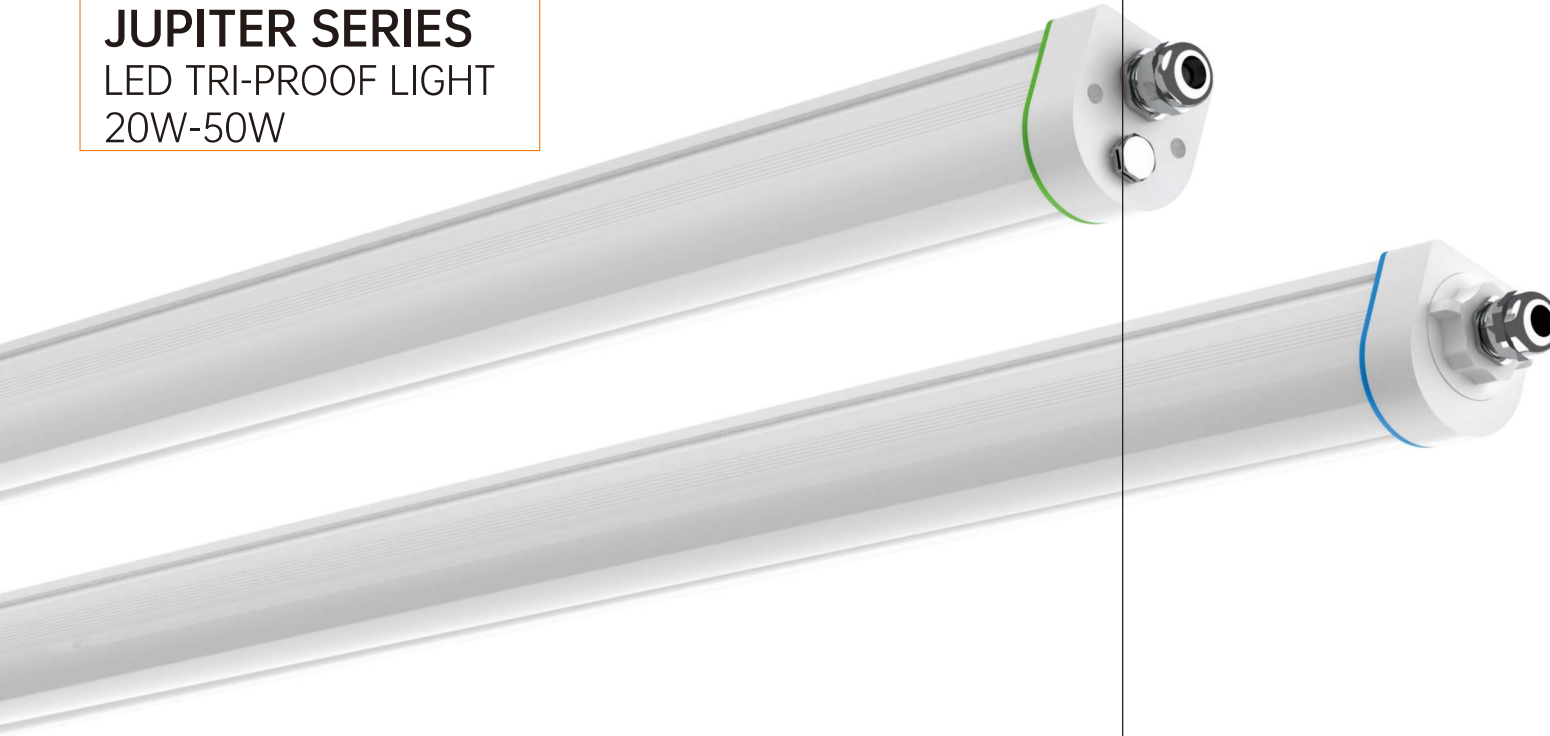


System Power	Product Size(L*W*H)mm
20W	600x51x46
35W	1200x51x46
50W	1500x51x46

JUPITER SERIES

LED TRI-PROOF LIGHT

20W-50W

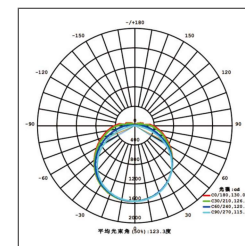


TECHNICAL PARAMETER

Model No.	System Power	Luminous Efficiency	Structure Description	Weight(kg)
MS-LL0620T202	20W	150lm/W	PC cover / PC base	0.56
MS-LL1235T202	35W	150lm/W	PC cover / PC base	0.86
MS-LL1550T202	50W	150lm/W	PC cover / PC base	1

IP65	IK08	PF >0.9	50Hz	CCT 2700K-6500K
10-85%RH	CRI 80/90 98	-20°C 45°C	>50000H	220-240V

LIGHT DISTRIBUTION CURVE



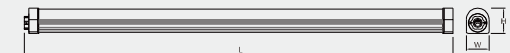
FEATURES

- ✦ Provides a visual reference for accurate hole placement of stainless steel mounting clips.
- ✦ An integrated captive nut ensures it remains fixed when tightening the cable gland from outside.
- ✦ The smooth fixture surface is entirely free of external latches or protrusions.
- ✦ Standard luminous efficacy: 150 lm/W.
- ✦ IP65 & IK08 suitable to be installed in wet and dusty environments.
- ✦ Optional Emergency Function.

APPLICATION

Wildly used in all types of production line, food plant, cool house, parking lot, factory, freight yard, shopping mall, and supermarket. It can replace traditional tri-proof lamp.

PRODUCT SIZES



System Power	Product Size(L*W*H)mm
20W	600x64x71
35W	1200x64x71
50W	1500x64x71

VENUS SERIES

LED TRI-PROOF LIGHT

25W-60W

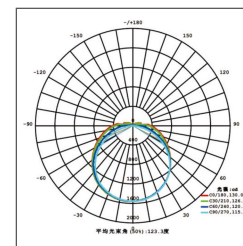


TECHNICAL PARAMETER

Model No.	System Power	Luminous Efficiency	Structure Description	Weight(kg)
MS-LL0625T301	25W	150lm/W	PC cover / PC base	0.61
MS-LL1250T301	50W	150lm/W	PC cover / PC base	0.97
MS-LL1560T301	60W	150lm/W	PC cover / PC base	1.15

IP65	IK08	PF >0.9	50Hz	CCT 2700K-6500K
10-85%RH	CRI 80/90 98	-20°C 45°C	>50000H	220-240V

LIGHT DISTRIBUTION CURVE



FEATURES

- ✦ Provides a visual reference for accurate hole placement of stainless steel mounting clips.
- ✦ An integrated captive nut ensures it remains fixed when tightening the cable gland from outside.
- ✦ The smooth fixture surface is entirely free of external latches or protrusions.
- ✦ Standard luminous efficacy: 150 lm/W.
- ✦ IP65 & IK08 suitable to be installed in wet and dusty environments.
- ✦ Optional Emergency Function.

APPLICATION

Wildly used in all types of production line, food plant, cool house, parking lot, factory, freight yard, shopping mall, and supermarket. It can replace traditional tri-proof lamp.

PRODUCT SIZES



System Power	Product Size(L*W*H)mm
25W	600x81.5x65
50W	1200x81.5x65
60W	1500x81.5x65

MARS SERIES

LED TRI-PROOF LIGHT

20W-50W

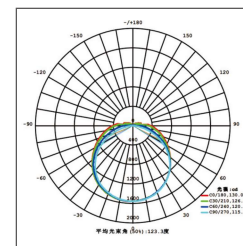


TECHNICAL PARAMETER

Model No.	System Power	Luminous Efficiency	Structure Description	Weight(kg)
MS-LL0620SY	20W	150lm/W	PC cover / PC base	0.5
MS-LL1235SY	35W	150lm/W	PC cover / PC base	0.73
MS-LL1550SY	50W	150lm/W	PC cover / PC base	0.86

IP65	IK08	PF >0.9	50Hz	CCT 2700K-6500K
10-85%RH	CRI 80/90 98	-20°C 45°C	>50000H	220-240V

LIGHT DISTRIBUTION CURVE



FEATURES

- ✦ Provides a visual reference for accurate hole placement of stainless steel mounting clips.
- ✦ An integrated captive nut ensures it remains fixed when tightening the cable gland from outside.
- ✦ The smooth fixture surface is entirely free of external latches or protrusions.
- ✦ Standard luminous efficacy: 150 lm/W.
- ✦ IP65 & IK08 suitable to be installed in wet and dusty environments.
- ✦ Optional Emergency Function.

APPLICATION

Wildly used in all types of production line, food plant, cool house, parking lot, factory, freight yard, shopping mall, and supermarket. It can replace traditional tri-proof lamp.

PRODUCT SIZES



System Power	Product Size(L*W*H)mm
20W	595x55x63
35W	1195x55x63
50W	1495x55x63

NOVA SERIES

LED TRI-PROOF LIGHT

20W-50W

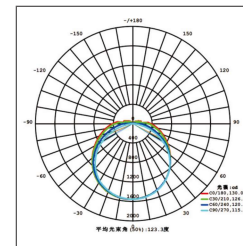


TECHNICAL PARAMETER

Model No.	System Power	Luminous Efficiency	Structure Description	Weight(kg)
MS-LL0620-1064	20W	150lm/W	PC cover / PC base	0.51
MS-LL1235-1064	35W	150lm/W	PC cover / PC base	0.68
MS-LL1550-1065	50W	150lm/W	PC cover / PC base	0.78

IP65	IK08	PF >0.9	50Hz	CCT 2700K-6500K
10-85%RH	CRI 80/90 98	-20°C 45°C	>50000H	220-240V

LIGHT DISTRIBUTION CURVE



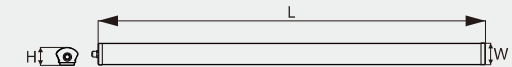
FEATURES

- ✦ Provides a visual reference for accurate hole placement of stainless steel mounting clips.
- ✦ An integrated captive nut ensures it remains fixed when tightening the cable gland from outside.
- ✦ The smooth fixture surface is entirely free of external latches or protrusions.
- ✦ Standard luminous efficacy: 150 lm/W.
- ✦ IP65 & IK08 suitable to be installed in wet and dusty environments.
- ✦ Optional Emergency Function.

APPLICATION

Wildly used in all types of production line, food plant, cool house, parking lot, factory, freight yard, shopping mall, and supermarket. It can replace traditional tri-proof lamp.

PRODUCT SIZES



System Power	Product Size(L*W*H)mm
20W	600x64x55
35W	1200x64x55
50W	1500x64x55

PULSE SERIES

LED TRI-PROOF LIGHT

20W-50W

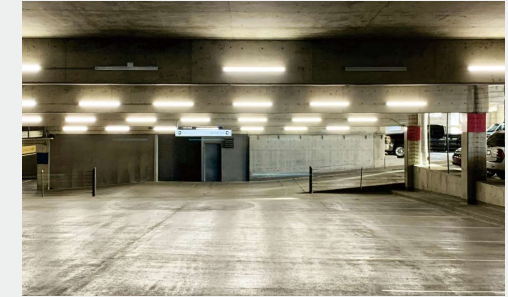
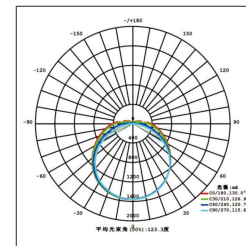


TECHNICAL PARAMETER

Model No.	System Power	Luminous Efficiency	Structure Description	Weight(kg)
MS-LL0620-1065	20W	150lm/W	PC cover / PC base	0.73
MS-LL1235-1065	35W	150lm/W	PC cover / PC base	1.13
MS-LL1550-1065	50W	150lm/W	PC cover / PC base	1.33

IP65	IK08	PF >0.9	50Hz	CCT 2700K-6500K
10-85%RH	CRI 80/90 98	-20°C 45°C	>50000H	220-240V

LIGHT DISTRIBUTION CURVE



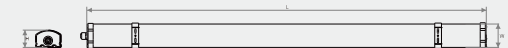
FEATURES

- ✦ Provides a visual reference for accurate hole placement of stainless steel mounting clips.
- ✦ An integrated captive nut ensures it remains fixed when tightening the cable gland from outside.
- ✦ The smooth fixture surface is entirely free of external latches or protrusions.
- ✦ Standard luminous efficacy: 150 lm/W.
- ✦ IP65 & IK08 suitable to be installed in wet and dusty environments.
- ✦ Optional Emergency Function.

APPLICATION

Wildly used in all types of production line, food plant, cool house, parking lot, factory, freight yard, shopping mall, and supermarket. It can replace traditional tri-proof lamp.

PRODUCT SIZES



System Power	Product Size(L*W*H)mm
20W	600x71x53
35W	1200x71x53
50W	1500x71x53

APPLICATION

