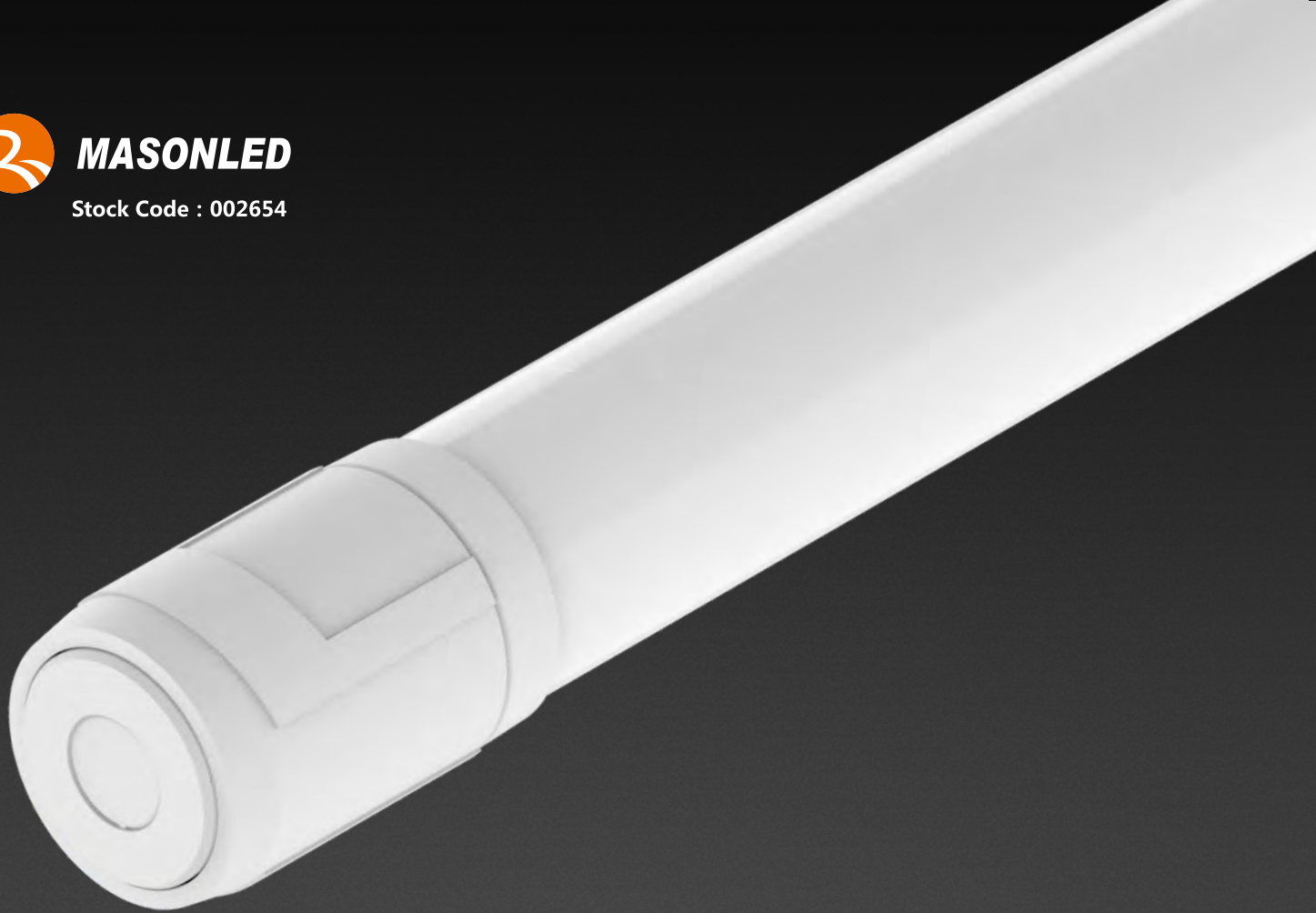




**MASONLED**

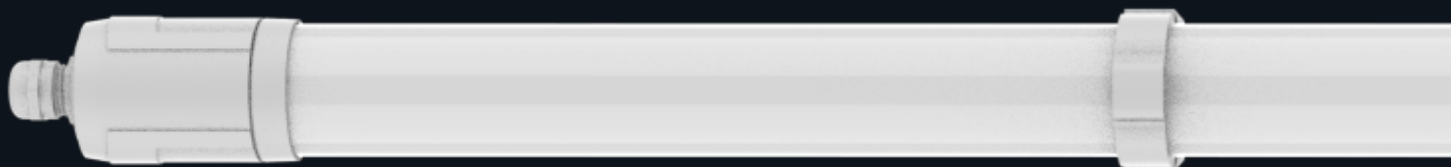
Stock Code : 002654



***SOCRATES SERIES***  
***LED TRI-PROOF LIGHT***



# PRODUCT ADVANTAGE



50,000 hours



-20°C to 45°C



IP65



IK08



Motion Sensor



DALI dimmable



Environmental  
protection fireproof material



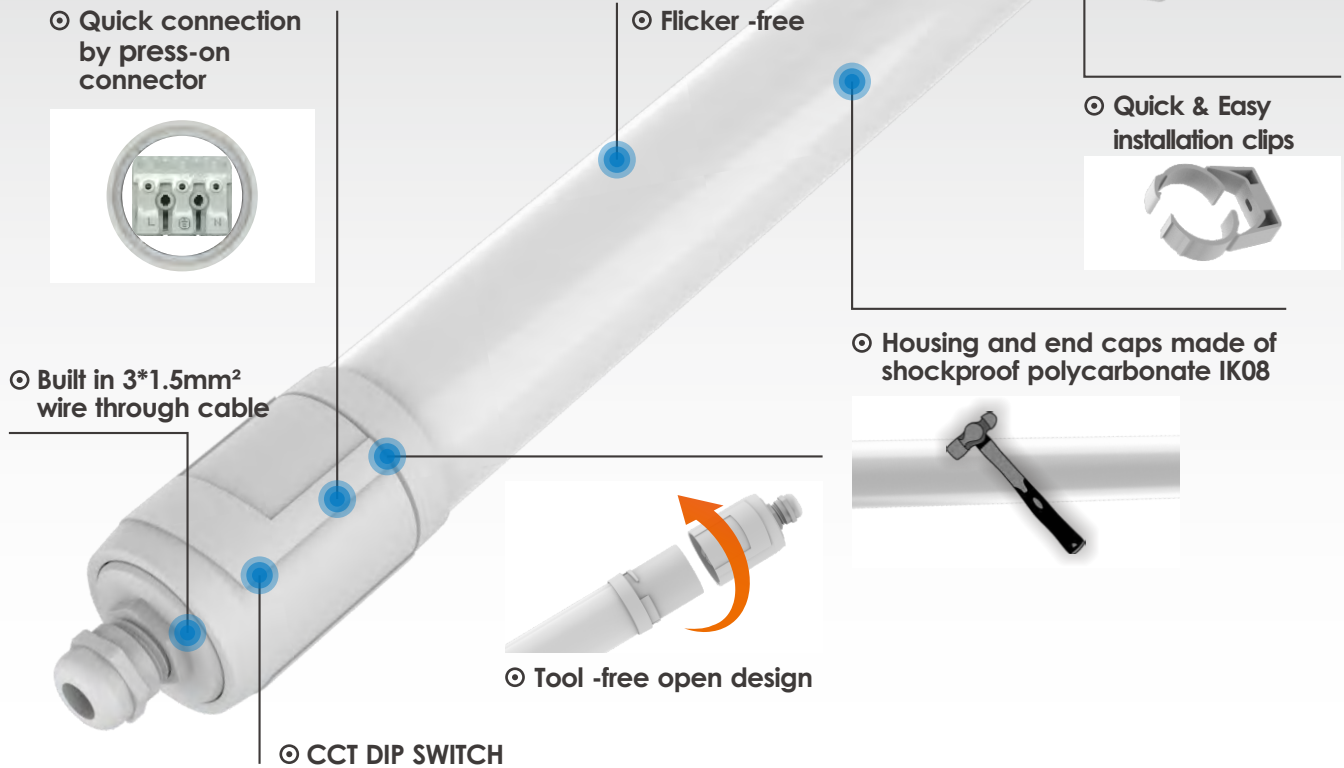
PIR Sensor



CCT DIP SWITCH

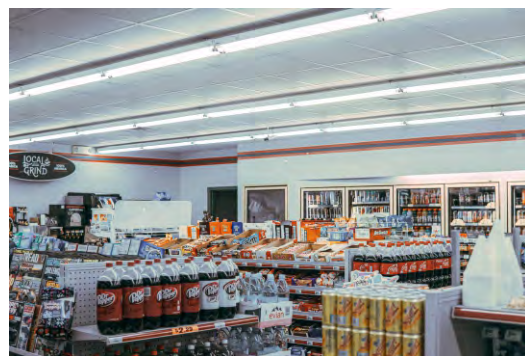


# SOCRATES SERIES TECHNOLOGY



## Product Features

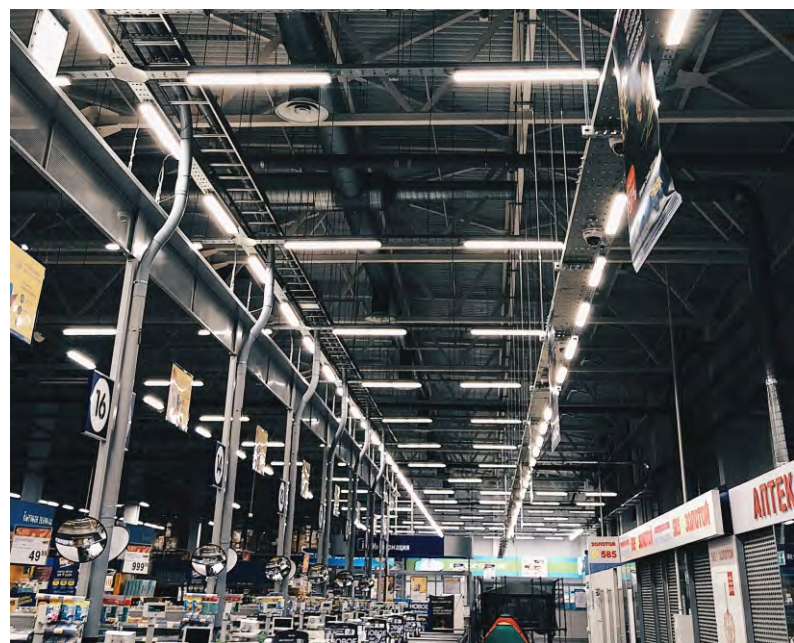
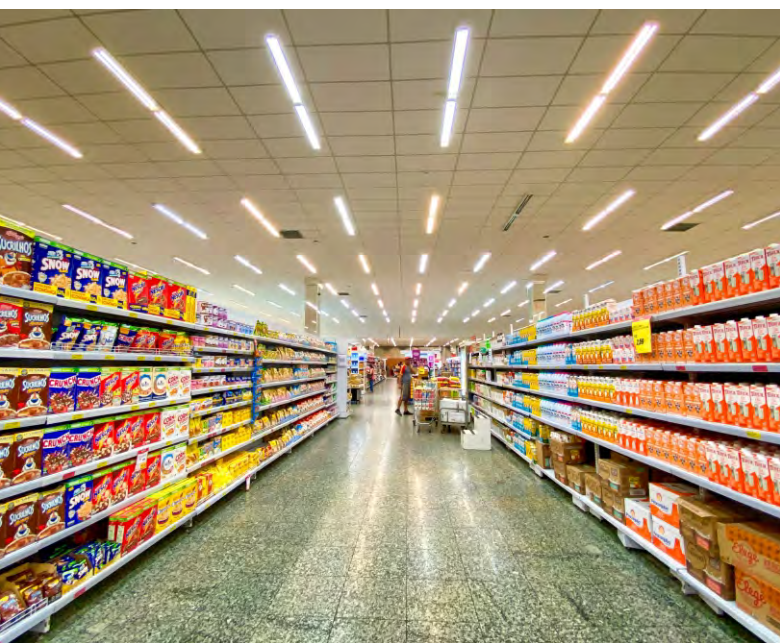
- ⊙ High-quality SMD LEDs are used to guarantee the light color stability & lumen maintenance rate of the luminaires.
- ⊙ Reliable electronic components are used for self-made driver, the reliability and stability of the luminaires have been greatly improved.
- ⊙ Secondary light distribution design with independent intellectual property rights, it improves the luminous efficiency of lamps; High transmittance optical PC material guarantees luminaires are with more efficient & even light.
- ⊙ Adopt new aluminum extrusion process to ensure lights' good heat dissipation.
- ⊙ Industrial & concise appearance design; Detachable lamp head wiring, Easy and fast installation
- ⊙ All Polycarbonate structure, better waterproof and anti-corrosion



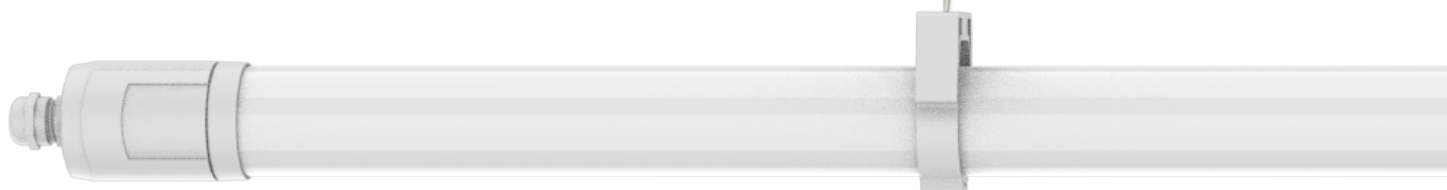


# TECHNICAL SPECIFICATIONS

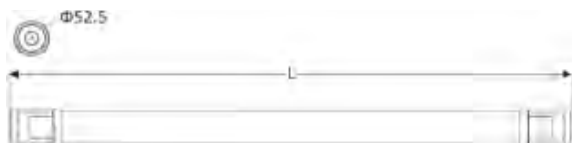
Model NO.	MS-LL06012-XXBF	MS-LL06012-40BF	MS-LL15045-XXBF	MS-LL15045-40BF
Wattage	12W		45W	
Input-voltage	AC180-264V			
Output Voltage	DC176-276V			
Power factor	>0.9			
Driver brand	MASON DRIVER			
Light efficiency	150-160lm/W			
Color temperature	3Way CCT Adjustable	4000K	3Way CCT Adjustable	4000K
CRI	80			
IP	IP65			
IK	IK08			
Flicker	/			
Dimming method	DALI dimmable			
THD	≤10%			
Electrical protection level	II			
Working temperature	-20°C+45°C			
Certificates	CE,ENEC			
Life span	50000H			
Exterior color	white			
Material	aluminum +PC			
Installation method	surface mount , suspended mount			
length	600		1500	
Light source	SMD2835			
LED quantity	152	76	420	210
Beam angle	120°			
Luminous flux	1680lm	1580lm	6210lm	5850lm
light efficiency	140	130	140	130



# SOCRATES SERIES LED TRI-PROOF LIGHT

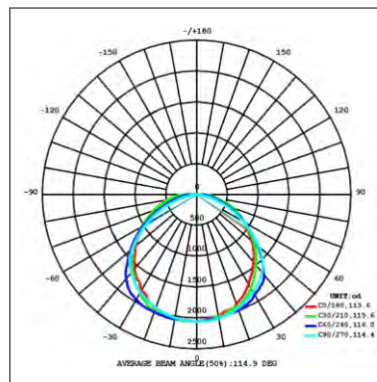


## Product Size

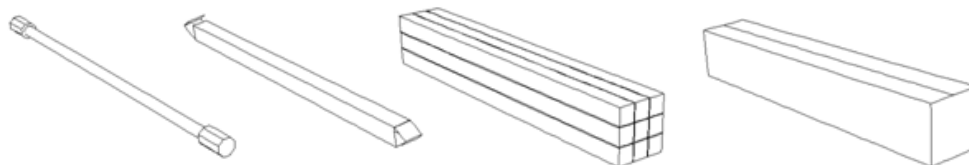


Model No.	Dimensions:L*W*H(unit mm)
MS-LL15045-XXBF	1500*Φ52.5
MS-LL15045-40BF	1500*Φ52.5
MS-LL06012-XXBF	600*Φ52.5
MS-LL06012-40BF	600*Φ52.5

## Distribution Curve (cd)



## Packaging diagram



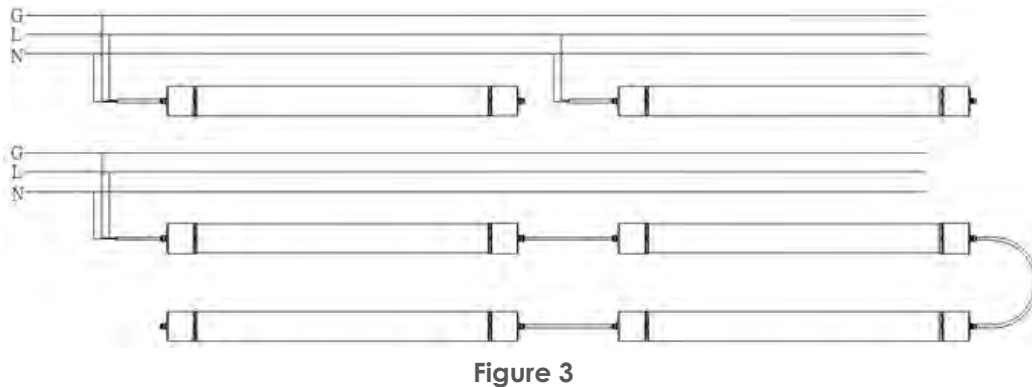
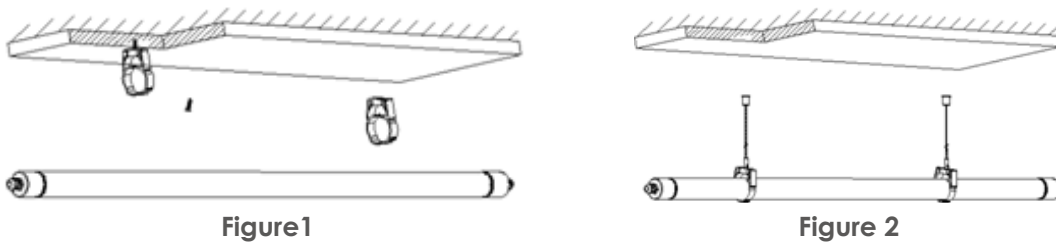
Model No.	Net weight	Gross weight	Outer box packing quantity	Outer Carton size
MS-LL06012-XXBF	3.83	6.09	9 box/Carton	840*260*270mm
MS-LL15045-XXBF	7.74	11.26	9 box/Carton	1715*260*270mm

# INSTALLATION DATA

## Installation instruction

1. open the package to check whether the product is consistent with the demand; Whether the product surface is intact, whether the product function meets the requirements.
2. Figure1 is Surface mounting, Figure2 is suspended mounting
3. Figure 3 is the wiring diagram

**Remark:** External wiring must meet 60245 IEC 57 standard requirements, And the cross-sectional area is not less than  $3 \times 1.0\text{mm}$



## Packaging, Shipping, Storage Requirements

The tri-proof lights are packed with carton, severe mechanical shock and exposure to the sun and rain is not allowed during transportation. Not upside down and strictly prevent throwing, tumbling, pressing. It should be stored in a cool, dry, clean environment, storage temperature is  $-20^{\circ}\text{C}$ - $45^{\circ}\text{C}$ .

## Precautions

It should read carefully instruction manual before use it to avoid accident and damage. This product is maintenance-free product, usually it is no need to be repaired, if you need pls contact our company for repairs, products should be checked carefully before use, if abnormal phenomenon are found during use, pls contact with our company. When in use, the surface of the lamp has a certain temperature rise, it is normal phenomenon.

## Safety Alert

It should ensure the product is intact before installation.  
Pls do not apply for external force and throw to tri-proof light,  
It should be stored in cool, dry, clean environment, it is prohibited to put into water, fire.