



Shenzhen Mason Technologies Co., Ltd (Headquarter)

Address: 18F, east building, great China international exchange square, Futian district, Shenzhen,Guangdong province,China.

Tel: +86-755-33378929

Guangdong Mason Technologies Co., Ltd (Production Base)

Address: No.1, West Industrial 1st Road, Songshan Lake, Dongguan 523808, China

Tel:+86-769-89950999 | Fax:+86-769-89950329 | E-mail:market@masonled.com

Statement : All of the product's parameters in this book are just for your reference, Mason have the right to revise or cancel the related parameters at anytime without advance notice. If you have questions, please contact our customer service hotline.

LAMIS SERIES LED STREET LIGHT

LAMIS SERIES LED STREET LIGHT

Professional road lighting
The whole series range from 20W to 200W



Lamis Series

Lamis use high efficient LED light source and professional optical lens, It is a professional lighting solution for roads and parking areas.



- ◉ lamis series provide wide wattages range from 20W to 200W with five sizes and different power.
- ◉ Integrated lamp arm with diameter $\phi 60\text{mm}$. Pads can be added for smaller size (Micro $\phi 50\text{mm}$).
- ◉ Interface with light control holes, can be equipped with 3-7pin light control.
- ◉ Integrated lens, luminous efficiency up to 180LM/W.
- ◉ Inherit ORO style, more economical.
- ◉ Upper open cover lamp fixture.
- ◉ Upper cover and electrical parts can be quickly removed and replaced.
- ◉ Auto power disconnection switch can be optional.
- ◉ Type 2, type 3, type 4, type 5 of lens can be optional.
- ◉ 3030, 2835, 5050 of light source can be optional.
- ◉ Light and electric separation structure, lower temperature, longer life.
- ◉ With bars on the back for better heat conduction.

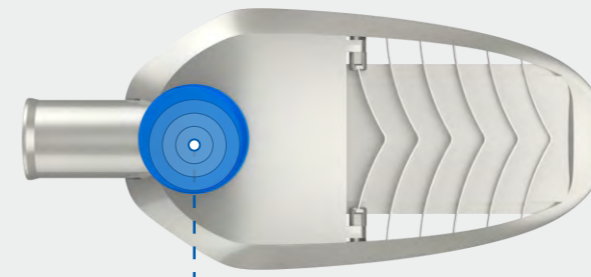
SMART CONTROL

NEMA Socket 3PIN\5PIN\7PIN



Control And Dimming System

- Light control & Dimming system
Photocontrol sensing on and off light, Ambient temperature and color temperature can be changed, timing photocontrol and other special functions (functions can be customized)
- Super low standby power consumption: Standby power less than 0.5W
- CCT dimmable, CCT can be dimmable from golden yellow 1800K to 6500K continuously, low CCT can directly replace gold halide lamp



Back side support NEMA or ZHAGA standard extension receptacle



Mobile Direct Control

**NO Gateway
NO Router**



Bluetooth



Mesh



LED Street Light

SKD SOLUTIONS

The Most Advantageous SKD Solutions In The World

Lens, LED modules, glasses, upper cover, electrical parts can be quickly removed and assembled.



Upper Open Cover Lamp Fixture

- Upper open cover lamp fixture design.
- Light and electric separation structure, lower temperature, longer life.



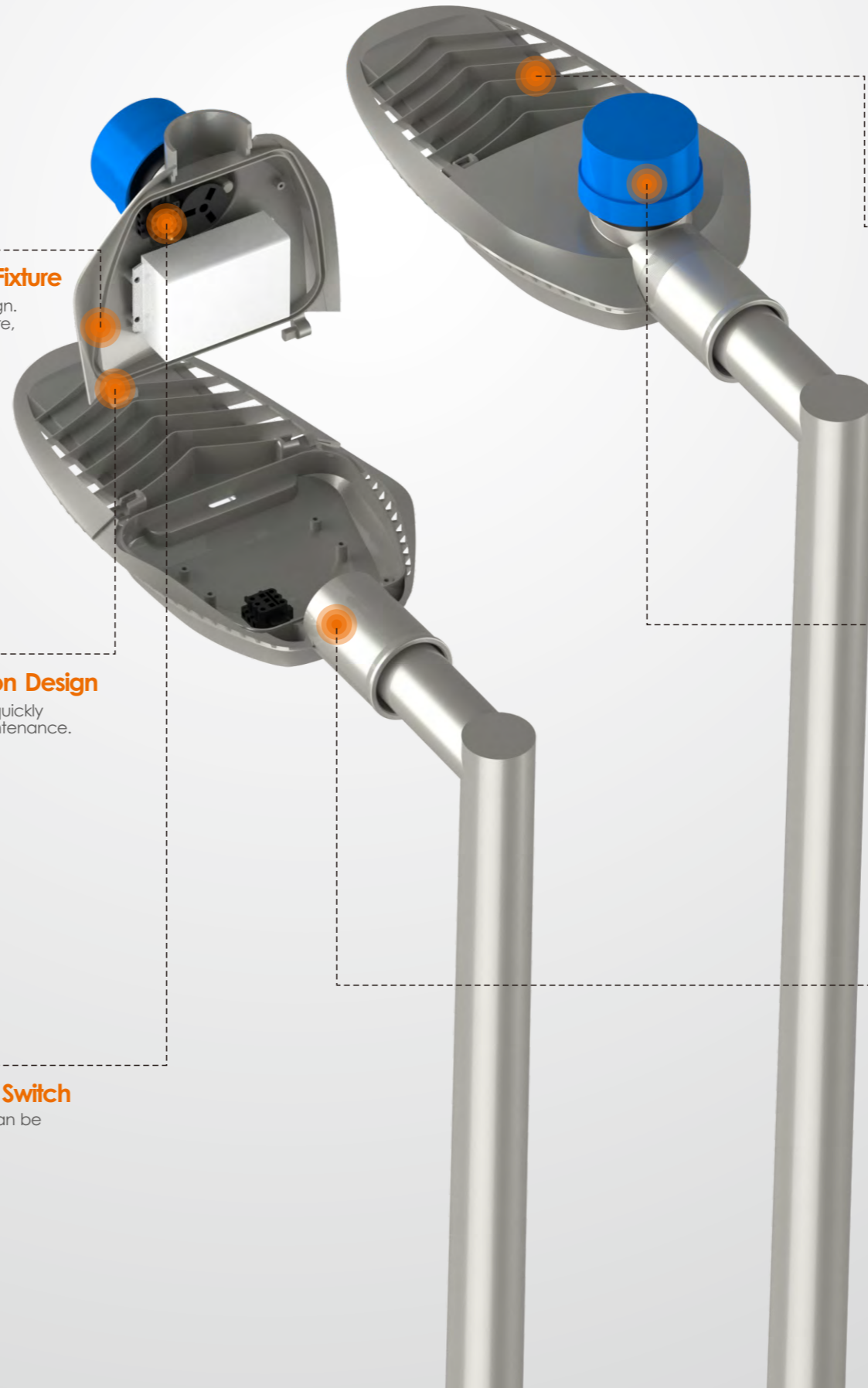
Light And Electric Separation Design

- Cover and electrical parts can be quickly removed for replacement and maintenance.



Auto Power Disconnection Switch

- Auto power disconnection switch can be optional.



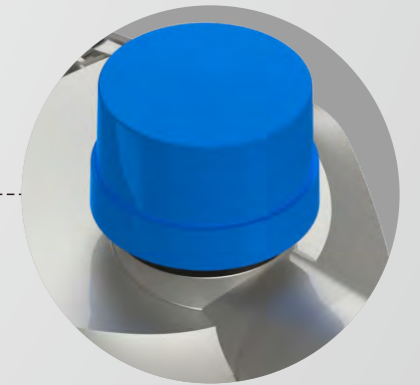
Heat Dissipation Design

- With bars on the back for better heat conduction.



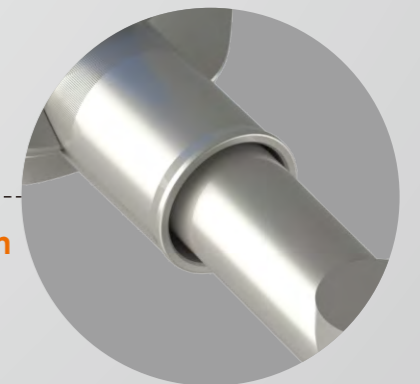
Light Control Holes Design

- Interface with light control holes, can be equipped with 3-7 pin light control.



Integrated Lamp Arm Design

- with diameter $\phi 60\text{mm}$.
- Pads can be added for smaller size.



WATERPROOF DESIGNS

IP66 High Efficient Waterproof Design

Lamps Are Available With IP66 Waterproof Solution.



Heat Sink Housing Design

Integrated design of heat dissipating bars design With bars on the back for better heat conduction, increase the life of the lamp

LIGHT SOURCE LENS

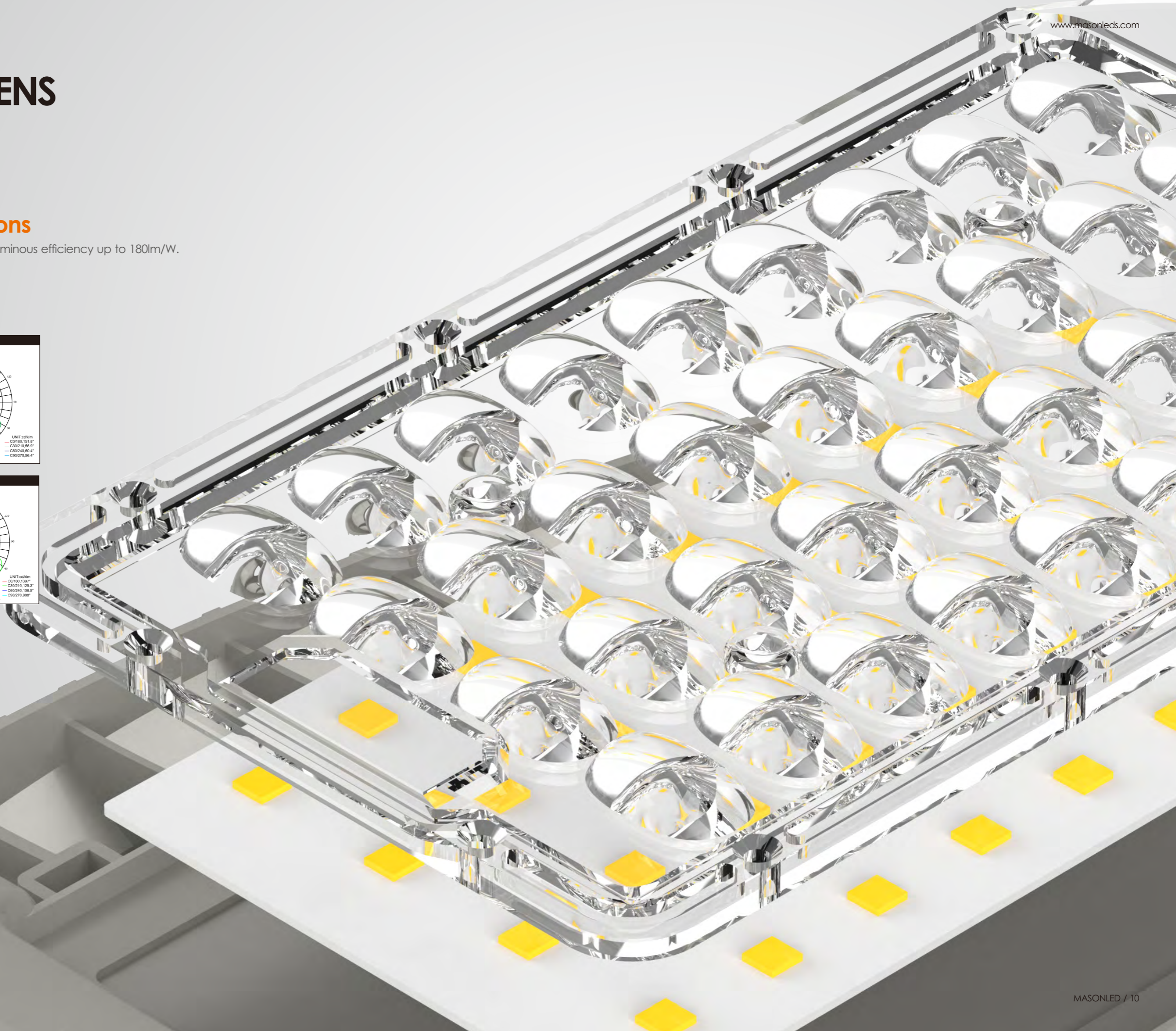
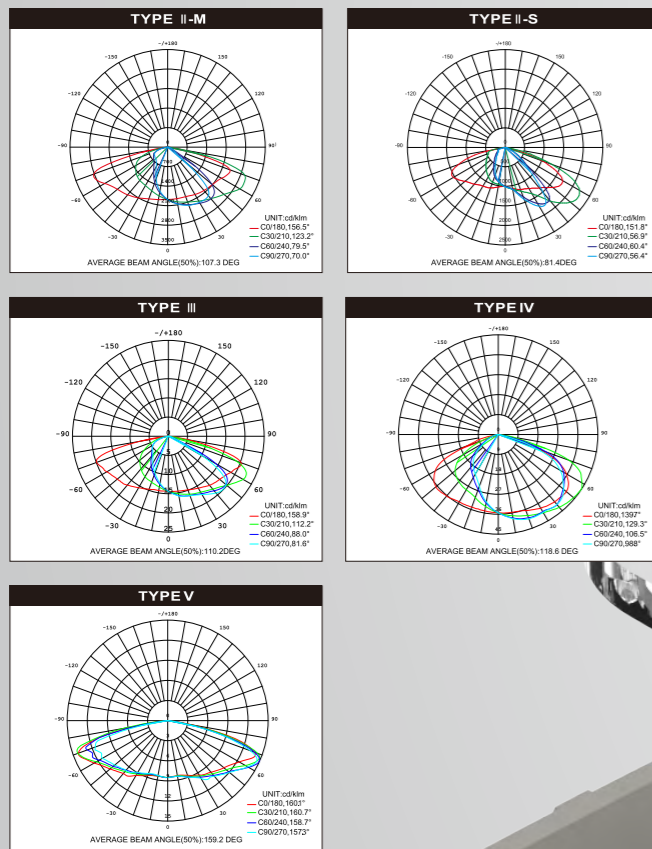
Intergrated Lens Design

Type 2, type 3, type 4, type 5 of lens for optional.

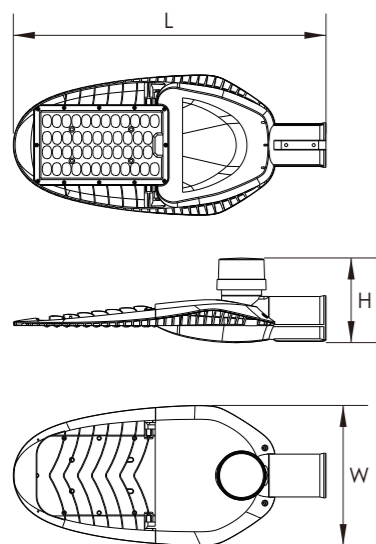
Various Light Source Options

3030, 2835, 5050 of light source can be optional. Luminous efficiency up to 180lm/W.

Light distribution curve



PRODUCT SIZES



Product	Power range	Product size	N.W.
Lamis Micro	20W-50W	430*185*87mm	3.6kg
Lamis Mini	60W-100W	510*229*96mm	4.6kg
Lamis Midi	110W-150W	570*265*96mm	5.6kg
Lamis large	160W-200W	640*304*104mm	7.6kg

TECHNICAL PARAMETER

LAMIS MICRO				
Model No.	MS-ST2030020	MS-ST2031030	MS-ST2032040	MS-ST2033050
Input voltage	100-277V	100-277V	100-277V	100-277V
Power factor	>0.95	>0.95	>0.95	>0.95
Power	20W	30W	40W	50W
Light Distribution Type	Typell~V	Typell~V	Typell~V	Typell~V
Luminous efficiency	180LM/W	180LM/W	180LM/W	180LM/W
CCT	4000K-5000K	4000K-5000K	4000K-5000K	4000K-5000K
CRI	>70	>70	>70	>70
IP	IP66	IP66	IP66	IP66
IK	IK08	IK08	IK08	IK08
Ta	50°	50°	50°	50°
Warranty	5 years	5 years	5 years	5 years
Net weight	3.6 KG	3.6 KG	3.6 KG	3.6 KG
Package dimensions	513*271*283mm	513*271*283mm	513*271*283mm	513*271*283mm

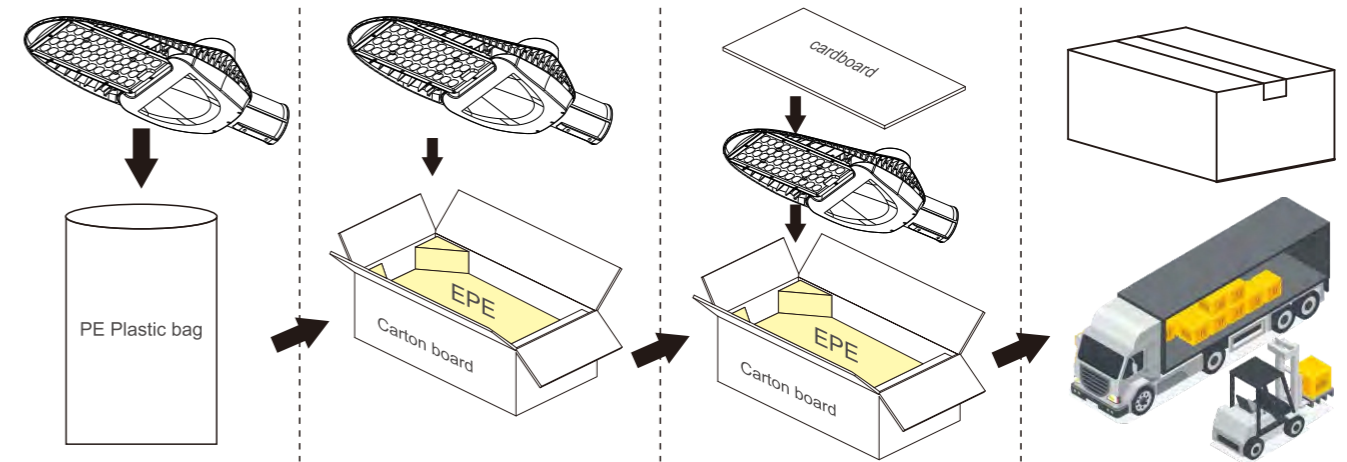
LAMIS MINI					
Model No.	MS-ST2034060	MS-ST2035070	MS-ST2036080	MS-ST2037090	MS-ST2038100
Input voltage	100-277V	100-277V	100-277V	100-277V	100-277V
Power factor	>0.95	>0.95	>0.95	>0.95	>0.95
Power	60W	70W	80W	90W	100W
Light Distribution Type	Typell~V	Typell~V	Typell~V	Typell~V	Typell~V
Luminous efficiency	180LM/W	180LM/W	180LM/W	180LM/W	180LM/W
CCT	4000K-5000K	4000K-5000K	4000K-5000K	4000K-5000K	4000K-5000K
CRI	>70	>70	>70	>70	>70
IP	IP66	IP66	IP66	IP66	IP66
IK	IK08	IK08	IK08	IK08	IK08
Ta	50°	50°	50°	50°	50°
Warranty	5 years	5 years	5 years	5 years	5 years
Net weight	4.6 KG	4.6 KG	4.6 KG	4.6 KG	4.6 KG
Package dimensions	586*305*295mm	586*305*295mm	586*305*295mm	586*305*295mm	586*305*295mm

TECHNICAL PARAMETER

LAMIS MIDI					
Model No.	MS-ST2039110	MS-ST2040120	MS-ST2041130	MS-ST2042140	MS-ST2043150
Input voltage	100-277V	100-277V	100-277V	100-277V	100-277V
Power factor	>0.95	>0.95	>0.95	>0.95	>0.95
Power	110W	120W	130W	140W	150W
Light Distribution Type	Typell~V	Typell~V	Typell~V	Typell~V	Typell~V
Luminous efficiency	180LM/W	180LM/W	180LM/W	180LM/W	180LM/W
CCT	4000K-5000K	4000K-5000K	4000K-5000K	4000K-5000K	4000K-5000K
CRI	>70	>70	>70	>70	>70
IP	IP66	IP66	IP66	IP66	IP66
IK	IK08	IK08	IK08	IK08	IK08
Ta	50°	50°	50°	50°	50°
Warranty	5 years	5 years	5 years	5 years	5 years
Net weight	5.6 KG	5.6 KG	5.6 KG	5.6 KG	5.6 KG
Package dimensions	620*310*140mm	620*310*140mm	620*310*140mm	620*310*140mm	620*310*140mm

LAMIS LARGE					
Model No.	MS-ST2044160	MS-ST2045170	MS-ST2046180	MS-ST2047190	MS-ST2048200
Input voltage	100-277V	100-277V	100-277V	100-277V	100-277V
Power factor	>0.95	>0.95	>0.95	>0.95	>0.95
Power	160W	170W	180W	190W	200W
Light Distribution Type	Typell~V	Typell~V	Typell~V	Typell~V	Typell~V
Luminous efficiency	180LM/W	180LM/W	180LM/W </td <td>180LM/W</td> <td>180LM/W</td>	180LM/W	180LM/W
CCT	4000K-5000K	4000K-5000K	4000K-5000K	4000K-5000K	4000K-5000K
CRI	>70	>70	>70	>70	>70
IP	IP66	IP66	IP66	IP66	IP66
IK	IK08	IK08	IK08	IK08	IK08
Ta	50°	50°	50°	50°	50°
Warranty	5 years	5 years	5 years	5 years	5 years
Net weight	7.6 KG	7.6 KG	7.6 KG	7.6 KG	7.6 KG
Package dimensions	690*350*140mm	690*350*140mm	690*350*140mm	690*350*140mm	690*350*140mm

PACKAGING INFORMATION



Product	Luminaire power	Carton size (outer box)(mm)	Qty per carton	Packing volume (outer box)
Lamis Micro	20W-50W	513*271*283mm	2	0.039
Lamis Mini	60W-100W	586*305*295mm	2	0.053
Lamis Midi	110W-150W	620*310*140mm	1	0.027
Lamis large	160W-200W	690*350*140mm	1	0.034

APPLICATION

