



Shenzhen Mason Technologies Co., Ltd (Headquarter)
Address: 18F, east building, great China international exchange square,
Futian district, Shenzhen,Guangdong province,China.
Tel: +86-755-33378929

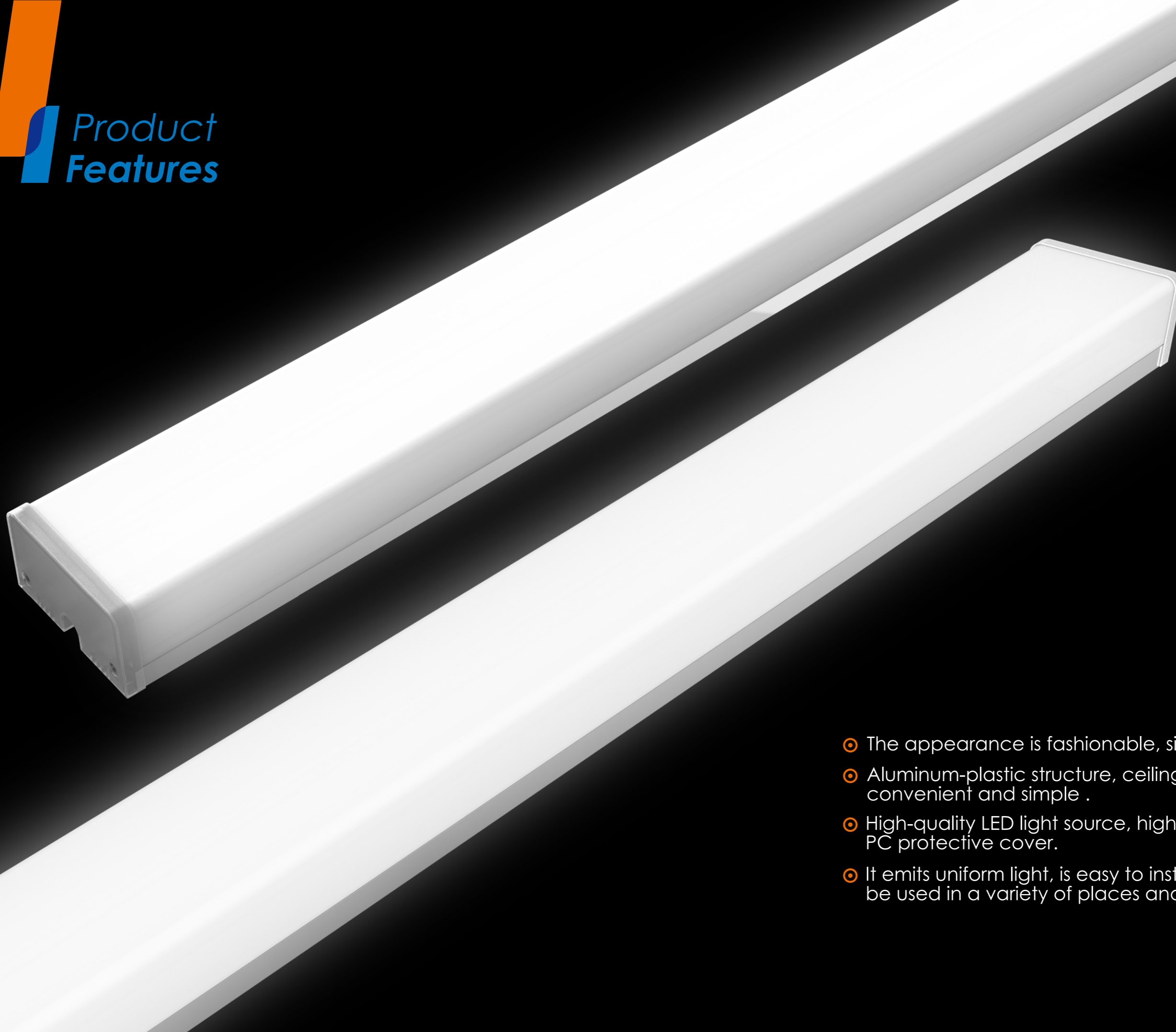
Guangdong Mason Technologies Co., Ltd (Production Base)
Address: No.1, West Industrial 1st Road, Songshan Lake,
Dongguan 523808, China
Tel:+86-769-89950999
Fax:+86-769-89950329
E-mail:market@masonled.com

36-50W

IVETA SERIES
LED LINEAR LIGHT



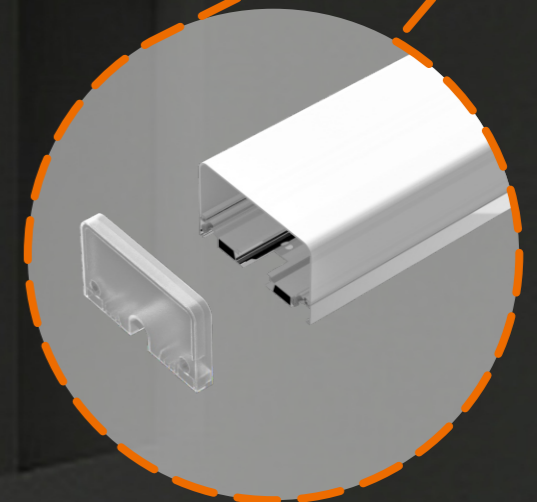
Product
Features



- The appearance is fashionable, simple and elegant.
- Aluminum-plastic structure, ceiling snap-on installation, convenient and simple .
- High-quality LED light source, high transmittance PC protective cover.
- It emits uniform light, is easy to install, and can be used in a variety of places and environments.

S+ LEVEL HIGH SEALING

Sealed design, dust-proof,
insect-proof and moisture-proof



High light transmittance PC cover,
high efficiency,
energy saving, power saving.



Dustproof



Waterproof, fogproof



Insect-proof



No visible flicker light,
the light efficiency
is comfortable

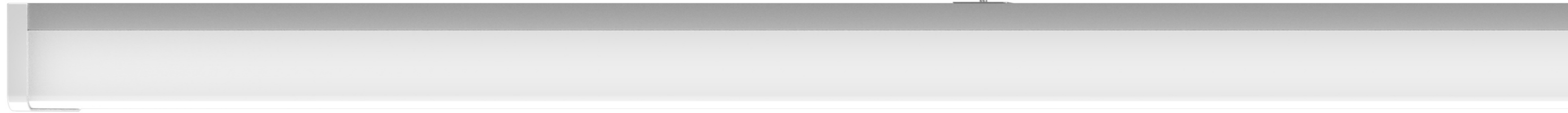


LED highlight lighting



Ceiling snap-on
installation

TECHNICAL SPECIFICATIONS



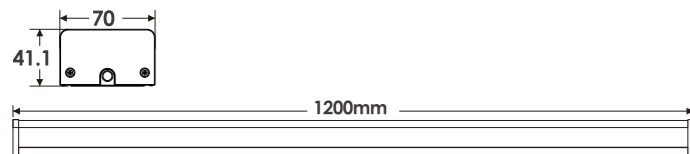
Model NO.	MS-LL010012036	MS-LL010015050
Wattage	36W	50W
Input-voltage	AC220-240V	
Frequency	50/60Hz	
Power factor	>0.9	
Dimming	No	
Luminous efficiency	130-150lm/W	
Color temperature	3000K/4000K/5000K/6500K	
CRI	>80	
Beam angle	130°	
Working temperature.(°C)	-20°C+45°C	
IP	IP20	
Lifenime	>50000H	
Product Size(mm)	1270*355*279mm	1570*355*279mm
Weight(kg)	0.536kg	0.68kg

Application

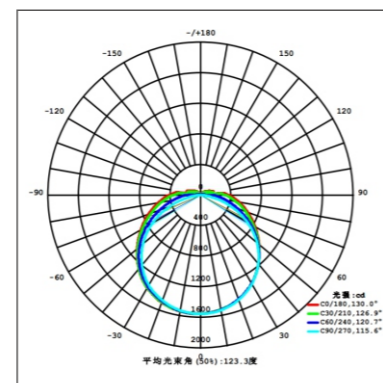
Suitable for Gallery, factories, schools, supermarket, office buildings etc. different application lighting.



Product Size



Distribution Curve (cd)



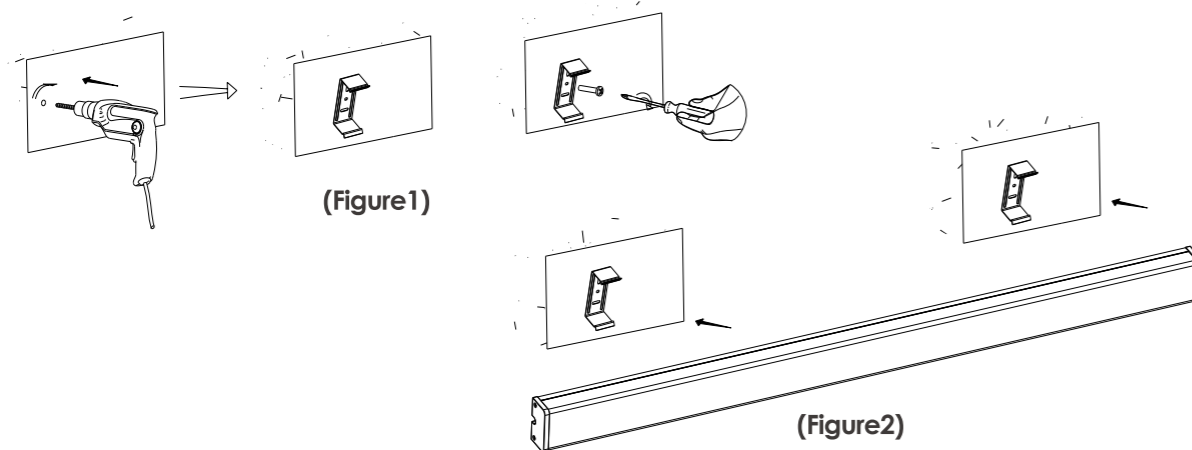
INSTALLATION MODE

WALL MOUNT

Open the package to check whether the product consistent with the requirements;whether the product surface is intact,whether the product function meets the requirements.

The installation of Luminaire

- Find a suitable installation location and use electric drill to drill holes on the installation surface (Figure1)
- Use the screwdriver to lock the buckle into the mounting hole with self-tapping screws(Figure1)
- Put the Luminaire into the corresponding buckle,and connect to electric supply (Figure 2)

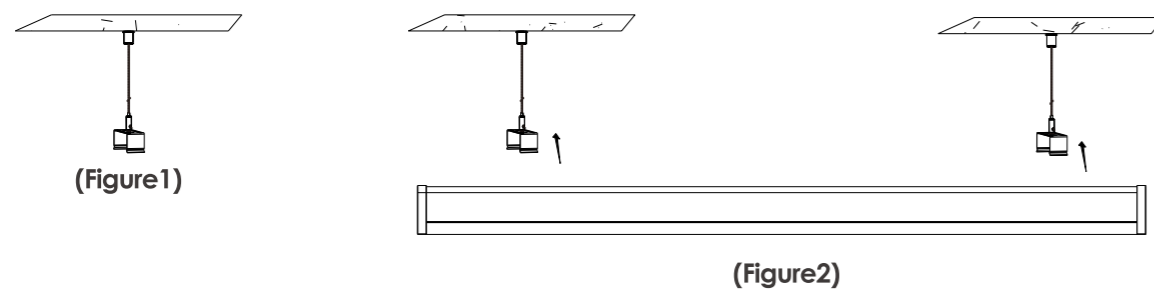


SUSPENDED MOUNT

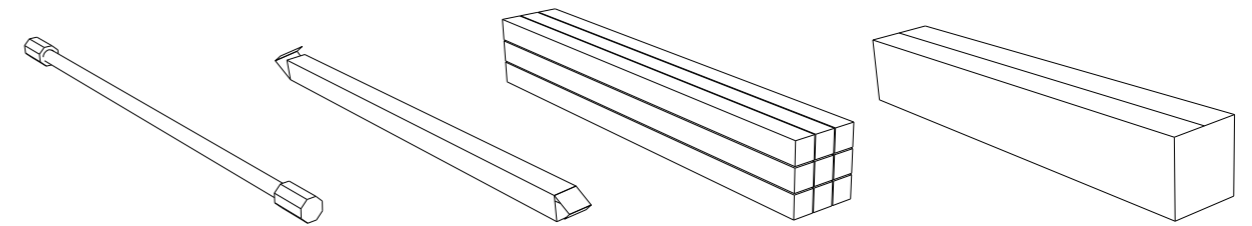
Open the package and check whether the product meets the requirements; whether the product surface is intact; whether the product function meets the requirements.

The installation of Luminaire

- Find a suitable installation position and install the buckle on the hanging chain (Figure 1)
- Put the Luminaire into the corresponding buckle,and connect to electric supply (Figure 2)



PACKAGE INFORMATION



Product Model Number	Net Weight	Outer Package Quantity	Carton Size
MS-LL010012036	0.536kg	9 box/Carton	1270*355*279mm
MS-LL010015050	0.68kg	9 box/Carton	1570*355*279mm

PRECAUTIONS

1. Please check whether the power cord of the luminaire is damaged before wiring.
2. Please check whether the cables connected to the power grid are completely powered off.
3. After connecting the power cord, the joints location between power cord and cable must be waterproofed, and the waterproof grade must be IP68.
4. The luminaire will generate slight heat during normal use, so please do not cover the lamp with objects or flammable materials.
5. When the luminaire is not used for a long time, please disconnect it from the electric supply.
6. If any abnormality is found ,please cut off the power for inspection and contact with your dealer.